

H-3-E 1-C-5 1-C-6 2-A-1 2-A-2 2-A-3 2-A-4 2-A-5 2-A-6 2-B-1

-88°53'10" -88°53'00" -88°52'50" -88°52'40" -88°52'30" -88°52'20" -88°52'10" -88°52'00" -88°51'50" -88°51'40" -88°51'30"

H-3-F

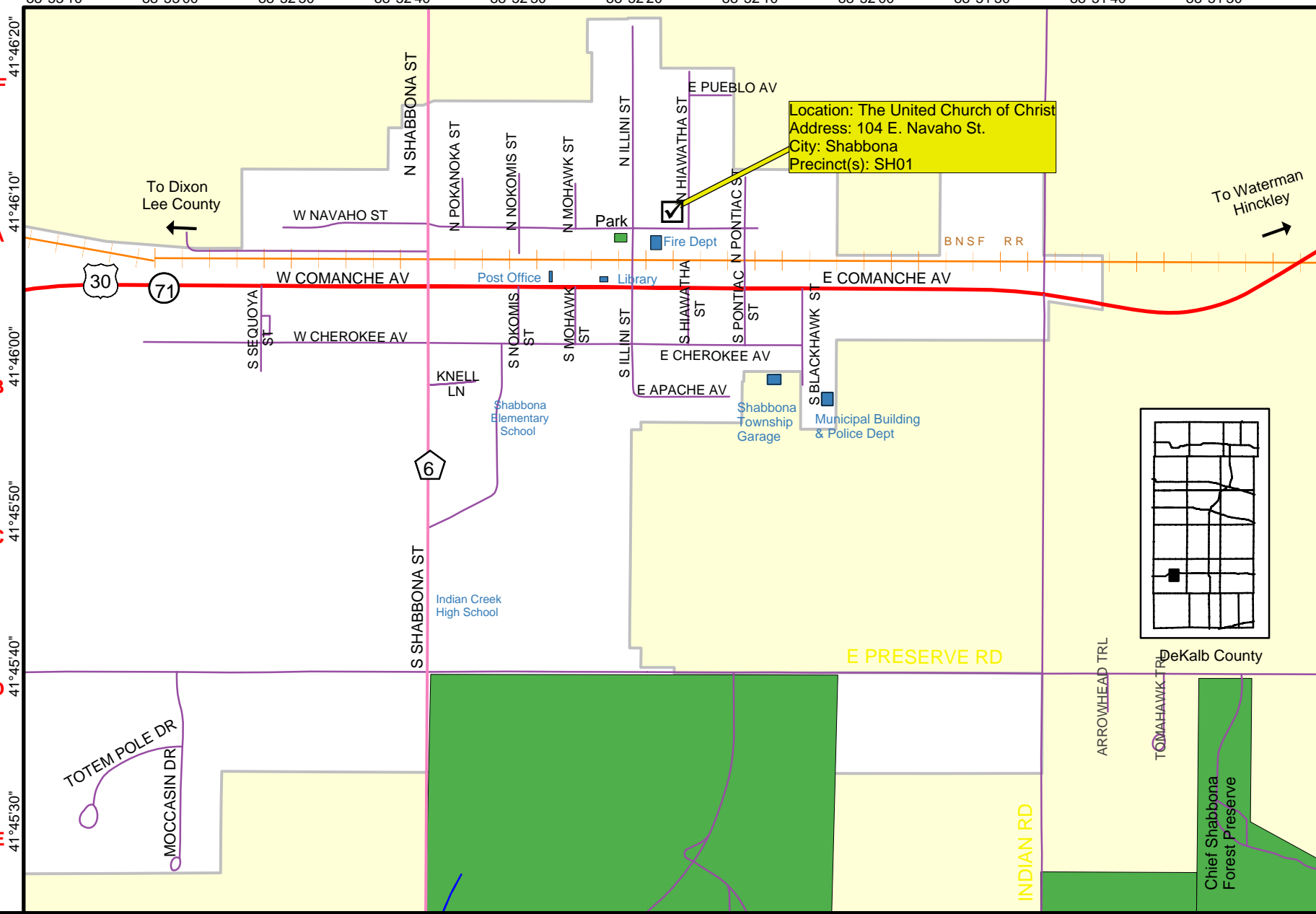
I-1-A

I-1-B

I-1-C

I-1-D

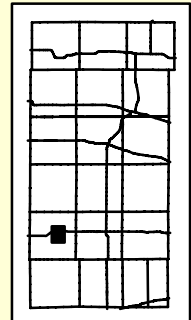
I-1-E



Location: The United Church of Christ
 Address: 104 E. Navaho St.
 City: Shabbona
 Precinct(s): SH01

To Dixon Lee County

To Waterman Hinckley



DeKalb County Government
 Information Management Office
 110 East Sycamore Street
 Sycamore, IL 60178
 815-895-1643
 view at www.dekalbcounty.org



Village of Shabbona Polling Locations

Updated: February 2008 BH
 Printed: February 2008

