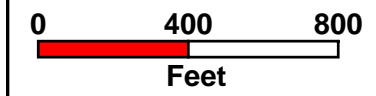


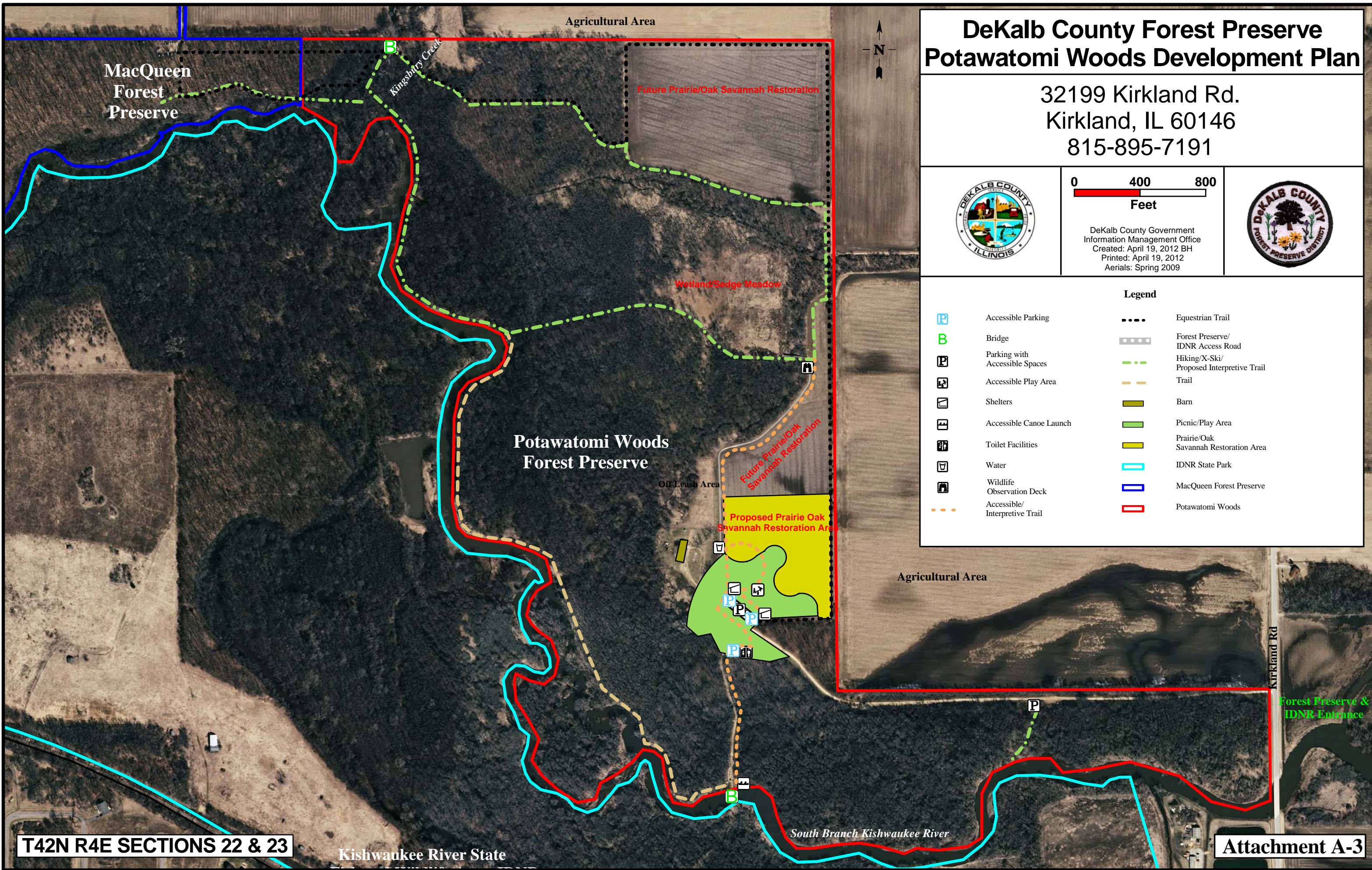
# DeKalb County Forest Preserve Potawatomi Woods Development Plan

32199 Kirkland Rd.  
Kirkland, IL 60146  
815-895-7191



DeKalb County Government  
Information Management Office  
Created: April 19, 2012 BH  
Printed: April 19, 2012  
Aerials: Spring 2009

| Legend |  |
|--------|--|
|        | Accessible Parking                       |
|        | Bridge                                   |
|        | Parking with Accessible Spaces           |
|        | Accessible Play Area                     |
|        | Shelters                                 |
|        | Accessible Canoe Launch                  |
|        | Toilet Facilities                        |
|        | Water                                    |
|        | Wildlife Observation Deck                |
|        | Accessible/Interpretive Trail            |
|        | Equestrian Trail                         |
|        | Forest Preserve/IDNR Access Road         |
|        | Hiking/X-Ski/Proposed Interpretive Trail |
|        | Trail                                    |
|        | Barn                                     |
|        | Picnic/Play Area                         |
|        | Prairie/Oak Savannah Restoration Area    |
|        | IDNR State Park                          |
|        | MacQueen Forest Preserve                 |
|        | Potawatomi Woods                         |



T42N R4E SECTIONS 22 & 23

Kishwaukee River State

Attachment A-3